



Cardigan Road, London, E3

BUTLER & STAG





# Spacious and modern three double bedroom apartment set within a popular development in an ultra-convenient location, just off Roman Road.



- Three Double Bedroom Apartment
- Third Floor with a Private Balcony
- Two Bathrooms (One En-Suite)
- Furnished
- Allocated Car Parking Space
- Spacious Open-Plan Kitchen / Living Area
- Victoria Park & Roman Road Moments Away
- Available from 18th March 2026

Perfectly located for a range of local amenities and the ever-popular Victoria Park, the property also provides easy access to the underground stations of Bow Road and Mile End, as well as Bow Church DLR.

Situated on the third floor, this must-see apartment features a large open-plan kitchen / living space with access out to a private balcony enjoying views over well-maintained communal gardens. Well-presented throughout, the property further comprises of three double bedrooms, two bathrooms (one en-suite) and plenty of hallway storage.

An additional benefit is the inclusion of an allocated underground car parking space, providing convenience and peace of mind for those with a vehicle.

Offered furnished from 18th March 2026, this must-see apartment is perfectly suited to three sharing professionals or a small family.

EPC Rating B  
Council Tax Band E



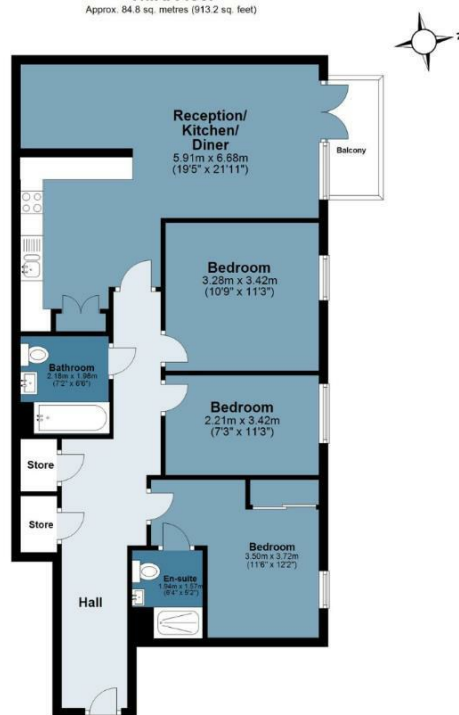




## Clement Attlee House

Approx. Gross Internal Area 84.8 sq. metres (913.2 sq. feet)

Third Floor  
Approx. 84.8 sq. metres (913.2 sq. feet)



Measurements are approximate and for illustration purposes only. While we do not doubt the accuracy and completeness, we advise you conduct a careful independent assessment of the property to determine monetary value  
© @modephoto.uk www.modephoto.co.uk

BUTLER & STAG

BUTLER & STAG

☎ 020 8102 1236

🏠 508 Roman Road, Bow, London, E3 5LU

✉ bow@butlerandstag.com

www.butlerandstag.uk

IMPORTANT NOTICE - These particulars have been prepared in good faith and they are not intended to constitute part of an offer or contract. We have not performed a structural survey on this property and the services, appliances and specific fittings have not been tested. All photographs, measurements, floor plans and distances referred to are given as a guide and should not be relied upon.